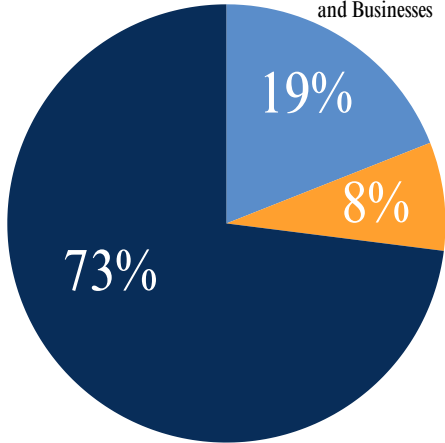




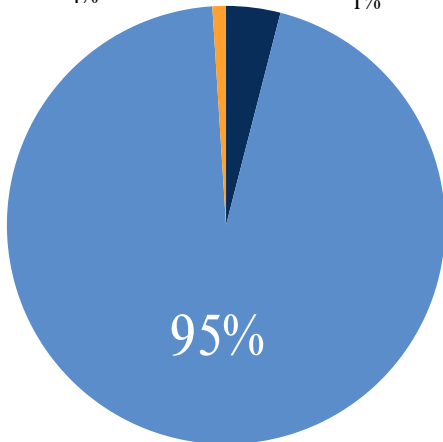
# INCOME

■ Grants ■ Churches ■ Individuals and Businesses



# EXPENSES

■ Admin 4% ■ Programs ■ Fundraising 1%



Platinum  
Transparency  
2023

Candid.

POM earned a 2023 Platinum Transparency Seal from Candid (Formerly Guidestar). This award is given to less than 1% of non-profits in the US and reflects our commitment to financial transparency with our community and with the public.

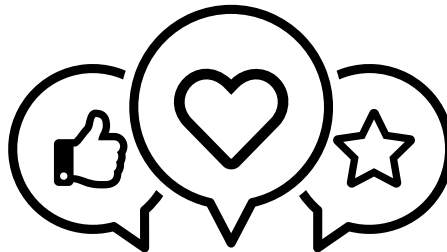


# KEEP IN TOUCH!

We have so much to share with you in 2024! Sign up for our newsletters and follow us on social media for any and all updates!

Newsletter sign up is online!

[plateauoutreach.org/newsletter-sign-up](https://plateauoutreach.org/newsletter-sign-up)



Become a Hope Builder!

Hope builders donate on a recurring basis. These donations can be any size you want and can add up to make a big impact! Sign up online.

[www.plateauoutreach.org/hope-builders](https://www.plateauoutreach.org/hope-builders)

## 2023 IMPACT SUMMARY



**POM's Vision:**  
A plateau where every family, every person, thrives in a community of love and support.

# 2023 Impact Summary



To review our complete annual report visit our website at:  
[www.plateauoutreach.org/annual-report](http://www.plateauoutreach.org/annual-report)

## FOOD BANK

Serving all who come through the door with love, compassion and dignity



# 10,461

## Household Visits

approximate 30% increase from 2022, based on data collected from both food banks.  
 30,498 Individuals



# 463,527

## Pounds of Food

Value \$935,141



# \$56,150

## Grocery Gift Cards

These restricted gift cards are donated by Safeway, from customers who give during the annual Nourishing Neighbors campaign. The purchase of tobacco, alcohol, or lotto is not permitted.

Funding for food banks provided in part by:



## THRIFT STORE

Our “thrift store with a purpose” provides clothing and household items to clients in need. The success at More Pennies From Heaven completely covered our administrative costs.



# \$46,606

## In-Kind assistance

Clothing, shoes, supplies, toiletries, etc. for clients in case management. For example, clients receive clothing for interviews helping them move forward. Our thrift store also partners to donate items that do not meet our selling standard to an organization in Ghana that employs over 100 local people.



# 14,530

Around 130 Volunteers donate their time in Food Bank, the Thrift Store, and General Services! Thank you! We couldn't do it without YOU!

## VOLUNTEER HOURS

Interested in supporting us financially, volunteering your time, or donating food and in-kind?  
 Visit our website:  
[www.plateauoutreach.org](http://www.plateauoutreach.org)

## SAMARITAN SERVICES

Giving help and hope to those struggling with poverty and adversity through case management and financial assistance.



# 1,996

## Households Served

5,048 individuals



# \$436,295

## Voucher

## Assistance Given

46% Rent, 48% Utilities



## 3 Levels of Service

Emergency Assistance

Extended Case Management

Turning Point - Long Term Case Management

Funding for outreach programs provided in part by:



Veterans, Seniors & Human Services Levy

